

# SPECIAL EVENT NOTICE

## CHANGED TRAFFIC CONDITIONS

**Sunday 2 April 2023**



Brisbane is hosting the annual Brisbane Cycling Festival presented by King St and Australian Unity Tour de Brisbane on the weekend of Thursday 30 March to Sunday 2 April 2023. This is a bike ride event supporting the Prince Charles Hospital and The Common Good to raise funds and awareness for medical research.

Road closures will be in place throughout Metropolitan Brisbane on Sunday 2 April 2023 to ensure competitor safety in accordance with the international event sanctioning.

Local Council, State Government and the Emergency Services have all contributed to the planning of this event. Emergency vehicles will maintain the right of way as coordinated by Queensland Police.

This event includes a significant police presence and traffic control operation. There are curfews in place for participants and roads will open progressively as the last rider passes each checkpoint.

We kindly ask that you plan ahead for your travel and review the planned changes to traffic conditions and road closures in your area and across Brisbane.

Residents on the course route are asked to call the **Event Hotline** on [07 3124 6099](tel:0731246099) for travel advice prior to the event.

### Contact Details

Web: [www.tourdebrisbane.org/roads](http://www.tourdebrisbane.org/roads)

Phone: 07 3124 6099

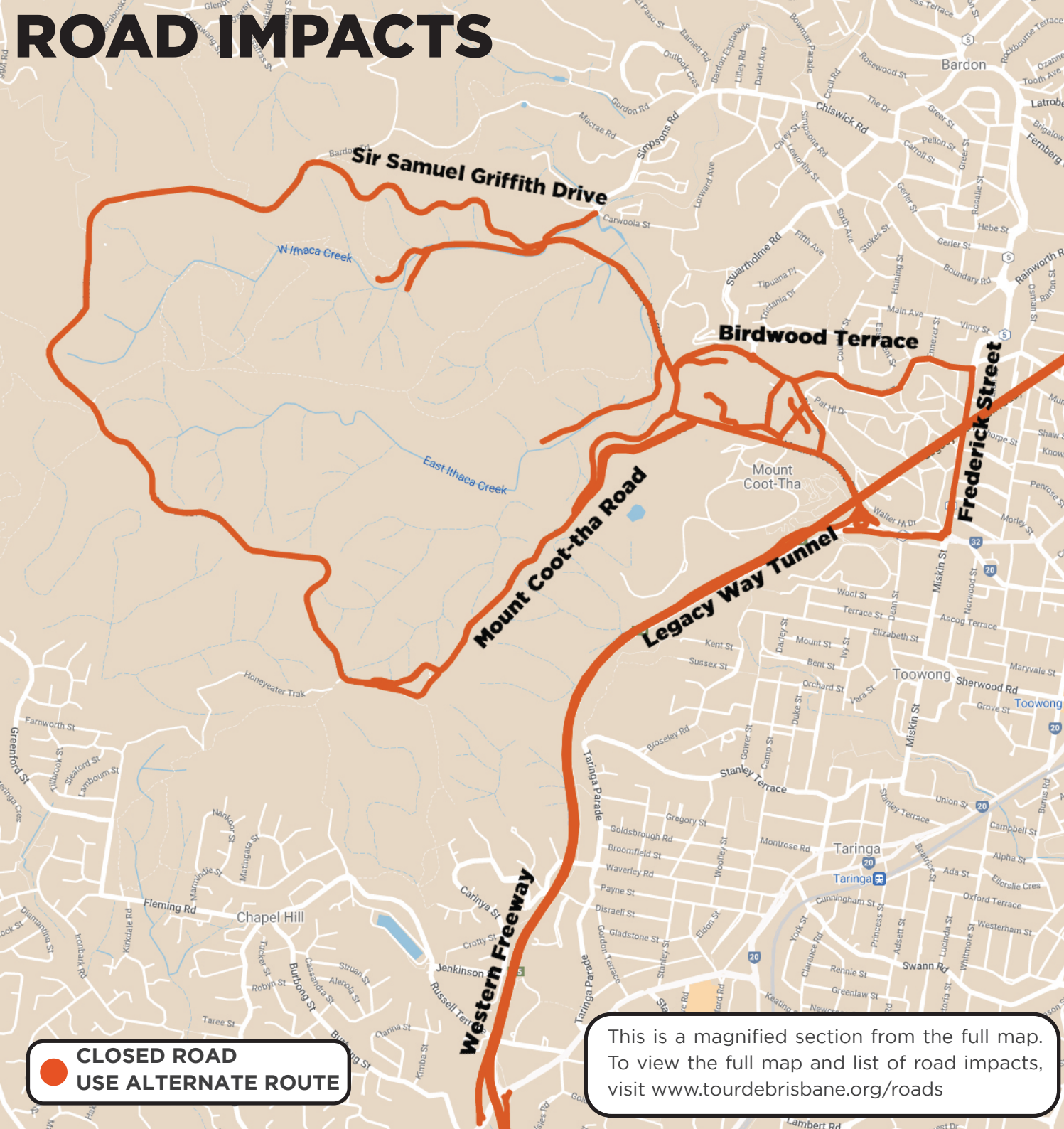
Email: [tourdebrisbane@nxsports.org](mailto:tourdebrisbane@nxsports.org)



**SCAN FOR WEBSITE**



# ROAD IMPACTS



**CLOSED ROAD**  
**USE ALTERNATE ROUTE**

This is a magnified section from the full map.  
To view the full map and list of road impacts,  
visit [www.tourdebrisbane.org/roads](http://www.tourdebrisbane.org/roads)

# GPS Wayfinding On Your Mobile

Event road closures have been uploaded with the major wayfinding apps, including Apple Maps, Google Maps, Waze, and TomTom.

We encourage you to give extra time for travel and prepare your route using one of these services on your mobile in order to minimise delays and use the quickest route.

## Public Transport

For information regarding public transport, visit [www.translink.com.au](http://www.translink.com.au)

## Impacts In Your Area

This is a list of impacts in your Area only. For a full list including a zoomable map, visit [www.tourdebrisbane.org/roads](http://www.tourdebrisbane.org/roads)

SUNDAY2APRIL2023			
Road/Site	Between	ImpactType	Time
Western Freeway Northbound	Moggill Road and Mt Coot-tha Road	Full Road Closure	5:00 - 12:00
Western Freeway Southbound	Mt. Coot-tha Road and Moggill Road	Full Road Closure	5:00 - 12:00
Milton Road	Miskin Street and Western Freeway	Full Road Closure	5:30 - 12:00
Milton Road	Croydon Street and Miskin Street	Changed Conditions	5:30 - 12:00
Frederick Street	Birdwood Terrace and Milton Road	Full Road Closure	5:30 - 12:00
Mt Coot-tha Road	Western Freeway and Sir Samuel Griffith Drive	Full Road Closure	5:30 - 12:00
Birdwood Terrace	Sir Samuel Griffith Drive and Frederick Street	Full Road Closure	5:30 - 12:00
Mt Coot-tha Road	Milton Road and Western Freeway	Full Road Closure	5:30 - 12:00
Richer Street	Birdwood Terrace and Mt Coot-tha Road	Changed Conditions	5:30 - 12:00
Ada Street	Mt Coot-tha Road and Richer Street	Changed Conditions	5:30 - 12:00
Walter Street	Mt Coot-tha Road and Birdwood Terrace	Changed Conditions	5:30 - 12:00
Horrocks Street	Mt Coot-tha Road and Richer Street	Changed Conditions	5:30 - 12:00
Paddington Drive	Sir Samuel Griffith Drive and Stuartholme School	Changed Conditions	5:30 - 12:00
Sir Samuel Griffith Drive	Scenic Drive and Mt Coot-tha Road	Full Road Closure	5:30 - 12:00
Scenic Drive	Mt Coot-tha Road and Sir Samuel Griffith Drive	Full Road Closure	5:30 - 12:00
Simpsons Road	Carwoola Street and Sir Samuel Griffiths Drive	Changed Conditions	5:30 - 12:00
Mt Coot-tha Road	Sir Samuel Griffiths Drive and Milton Road	Changed Conditions	5:30 - 12:00